

Pioneer Livestock NB IoT Ear Tag Solar GPS Solution

Pioneer IoT



Multiple positioning with NLIS Ear Tag

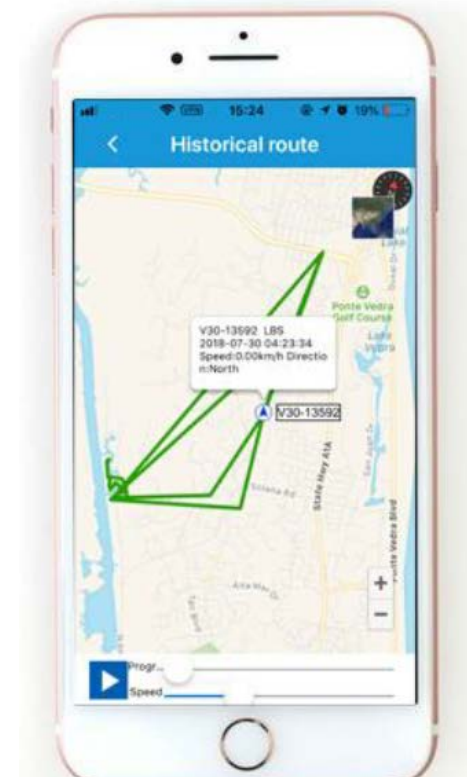
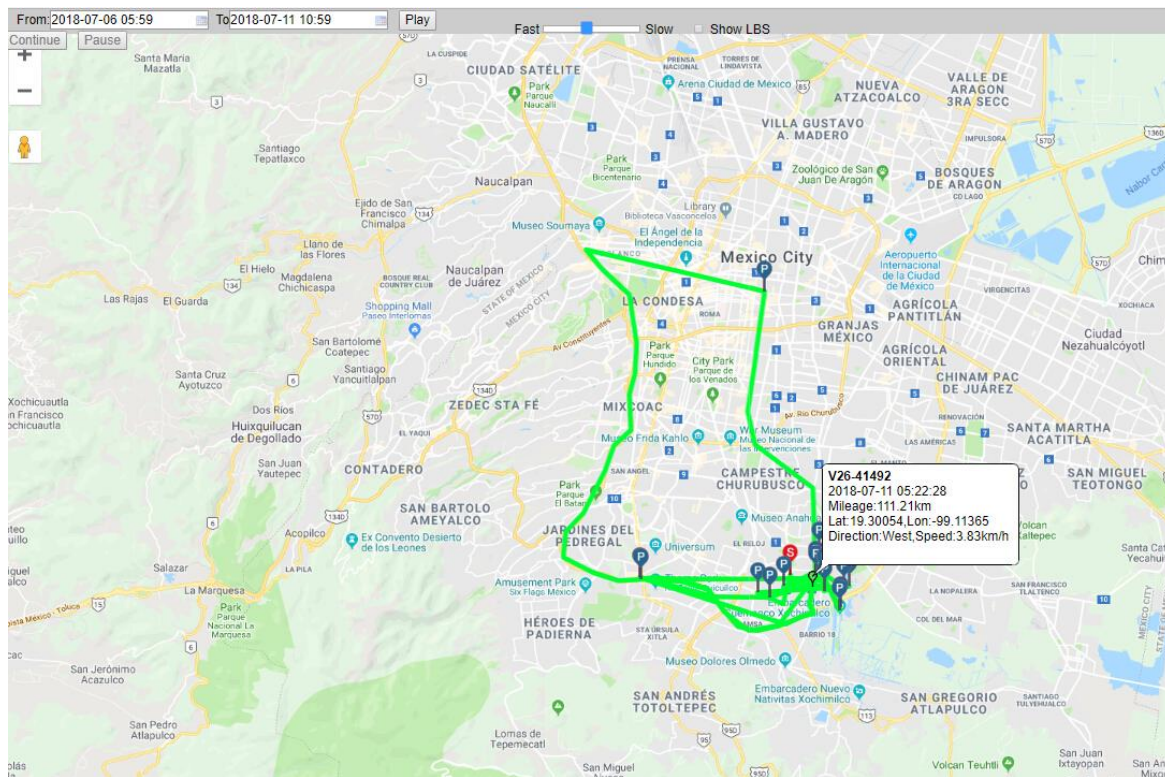
GPS tracking+WiFi & Temperature Sensor (Optional) , Wide coverage
Positioning with NLIS RFID Ear Tag (Optional)



GPS Positioning
Wifi Positioning (Optional)

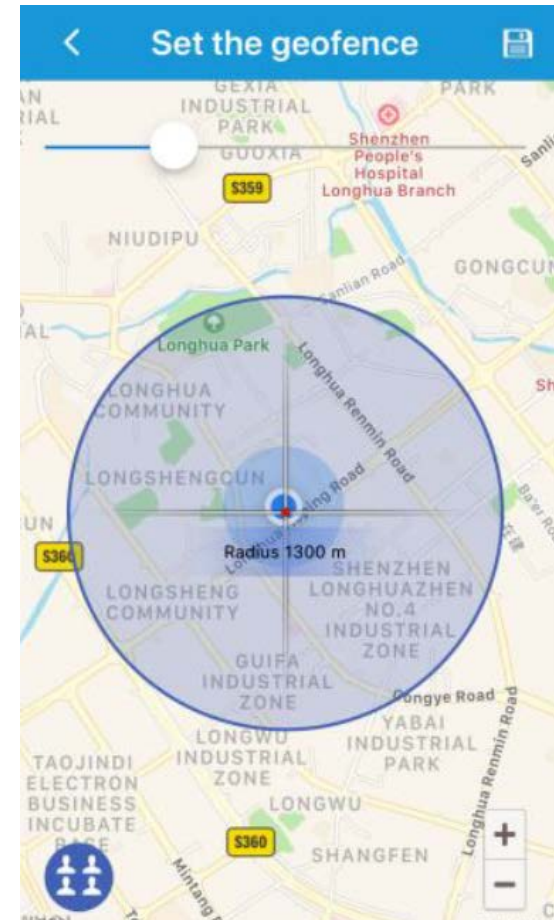
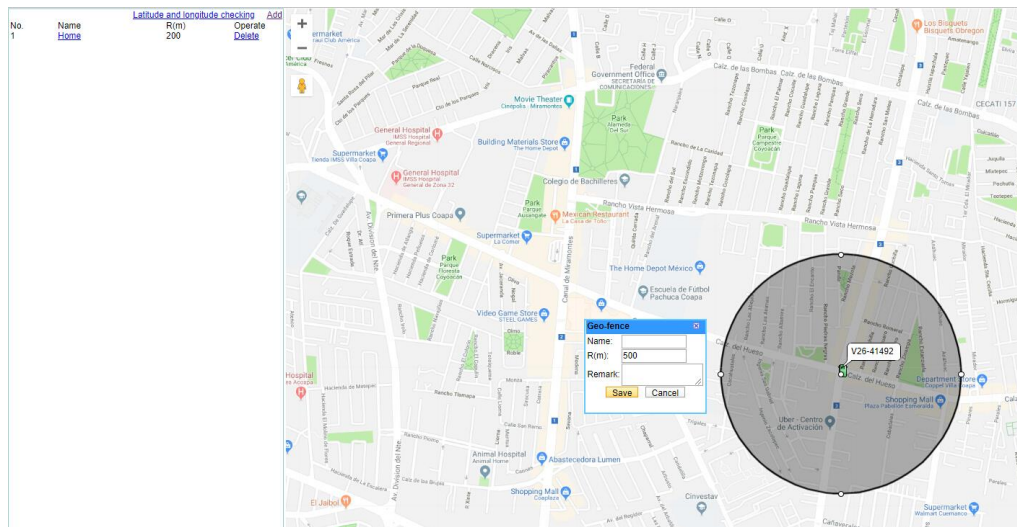
Historical route display

Record the action track within 90 days and can check the playback at any time.



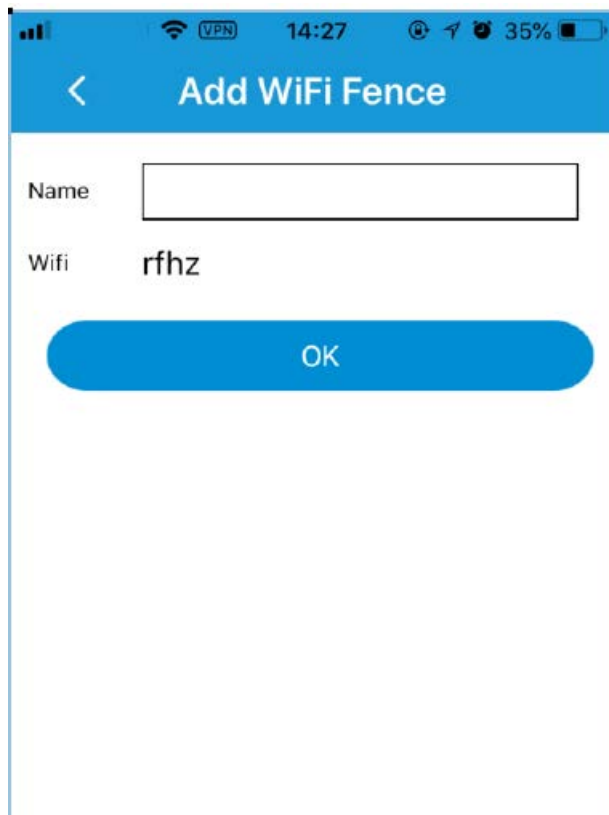
Geo-Fence

Creative Geo-fence on Google map,when pet leave or come back home, you will get the alarm immediately.



WiFi Fence(Optional)

Creative WiFi fence, binding the WiFi hot spot, when loved ones leave or come back home, you will get the alarm immediately.



The screenshot shows a mobile app interface for adding a WiFi fence. At the top, there's a blue header with a back arrow and the text 'Add WiFi Fence'. Below the header, there's a 'Name' label followed by an empty text input field. Underneath that, the 'Wifi' label is followed by the text 'rfhz'. At the bottom of the form is a large blue button with the text 'OK'. The status bar at the very top shows signal strength, VPN, time (14:27), and battery level (35%).



Solar power recharge automatically

Highly low-light single crystal silicon with high hardness and full glass fiber bottom plate, high charging efficiency and wear resistance.

Charging under the sun automatically, guarantee the safety of your loved ones. Built-in 1500mAh or 3000mAh battery, offering an extra protection.



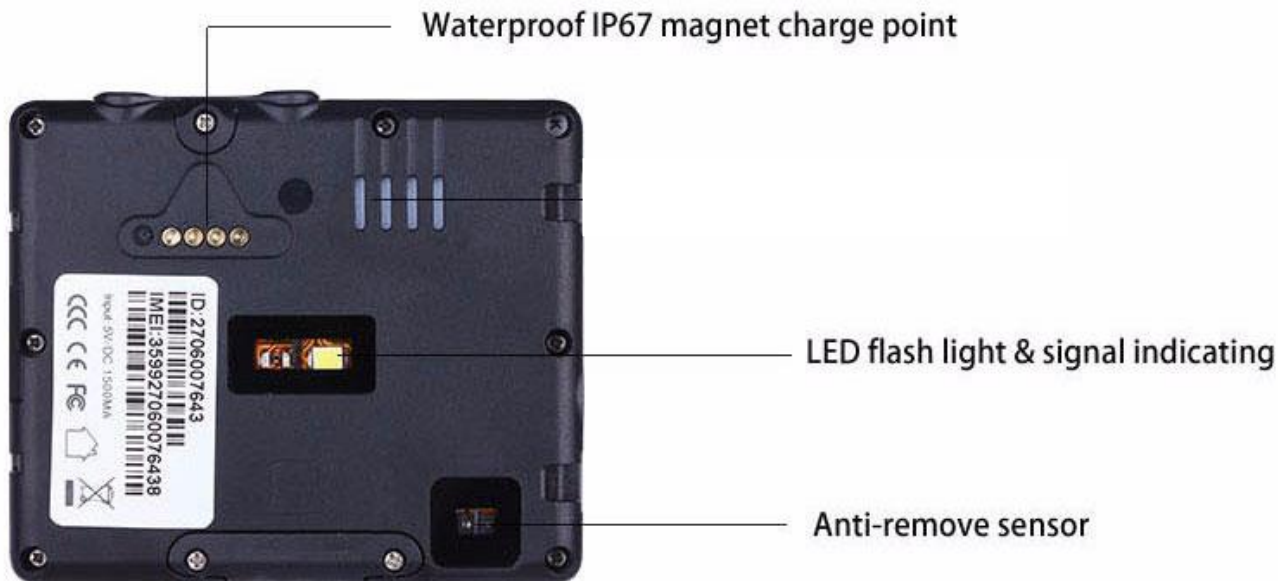
Waterproof IP67

Adopting the highest IP66 waterproof, added dense design and deeply waterproof and dustproof, which prevents rain and dirt. It also prevents any bad environment. It works well through putting in water and soil. It is suitable for outdoor use



Anti-remove alarm

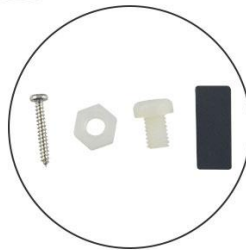
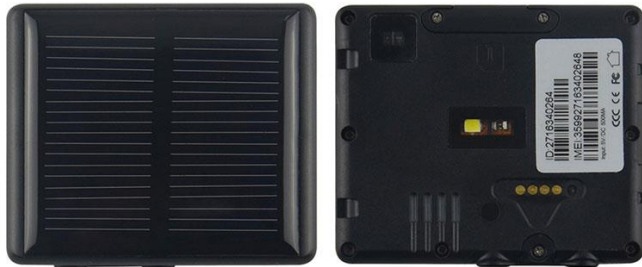
Utilize built-in light sensing and infrared dual sensor chip , when the thief removes the device, it will send an alarm message to the master number automatically. One more guarantee of property security.



Livestock Application Scenarios



Feature details



Product Specification:

NB-Iot network: B1 B3 B5 B8 B20 B28

Data Rate: TCP/IP 65kbps

Positioning time: Cold start 30 Sec (open sky)

Warm start 29 Sec (open sky)

Hot start 5 Sec (open sky)

GPS Positioning (open sky)

Wifi & Temperature Sensor (Optional)

Working temperature: -20°C ~ +70°C

Working humidity: 5% ~ 95% RH

Host size: 65.0*55.0*17mm

Host weight: 64g

Package size: 8.2*8.2*4.6cm

Package weight: 150g